

CITY PLAN 2019 - 2040

Schedule of changes to Westminster's spatial designations and Policies Map

Regulation 19 Consultation

March 2024

Contents

1 Introduction	3
1.1 Introduction	4
2 Overview of all changes to Westminster’s spatial designations and Policies Map	5
2.1 Overview of all changes to Westminster’s spatial designations and Policies Map.....	6

1 Introduction

1.1 Introduction

This document summarises the proposed changes to Westminster's spatial designations and Policies Map for the partial revision to Westminster's City Plan 2019 - 2040. This statement accompanies the Regulation 19 Publication Draft City Plan (2024) and its associated Regulation 19 Draft Policies Map.

The Westminster City Plan was adopted in April 2021 and is subject to its first partial revision which seeks to:

- Strengthen the affordable housing policy.
- Introduce a new retrofit first policy.
- Incorporate four new site allocations.

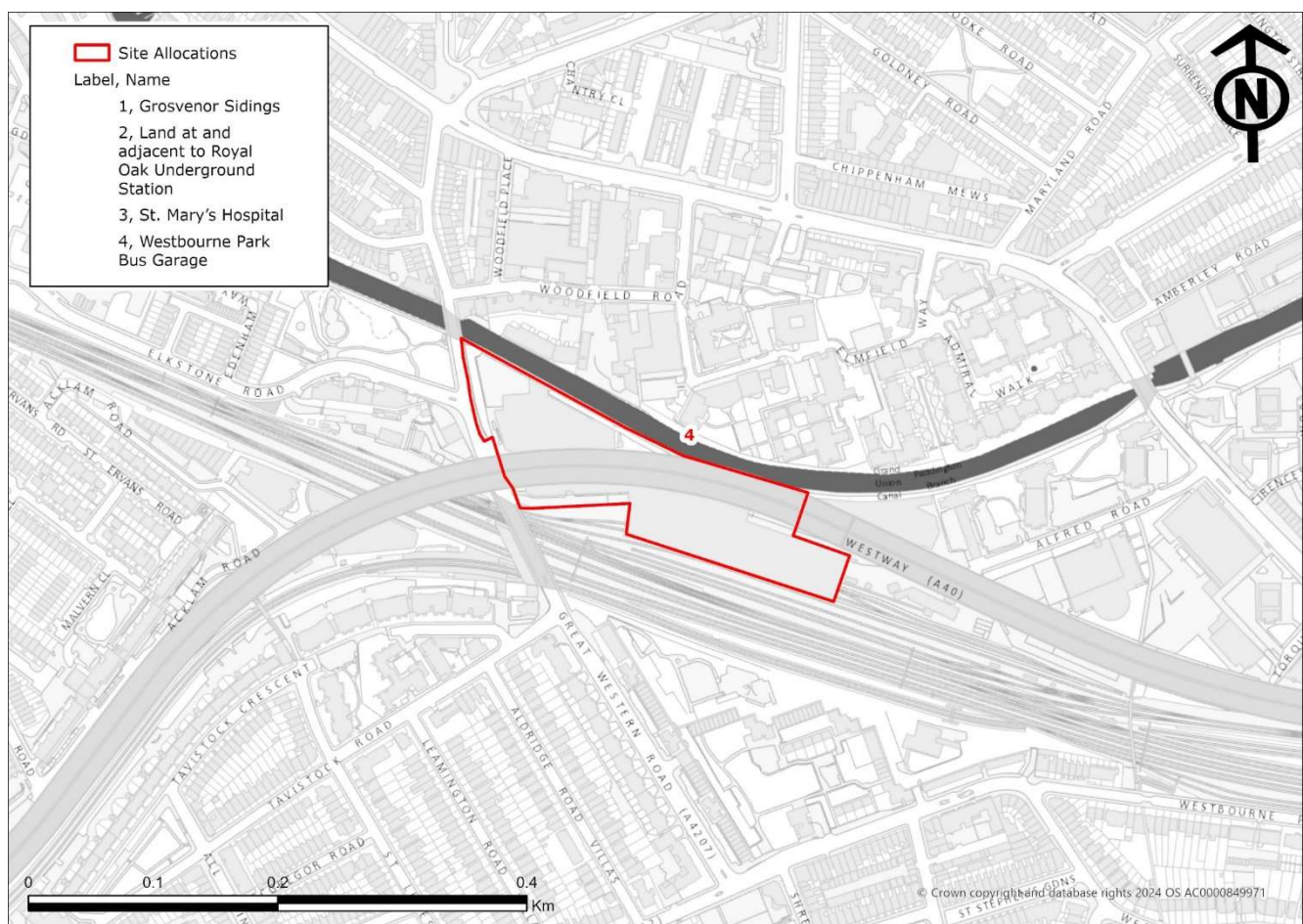
The only changes to the policies map in the partial City Plan review relate to the introduction of site allocations.

2 Overview of all changes to Westminster's spatial designations and Policies Map

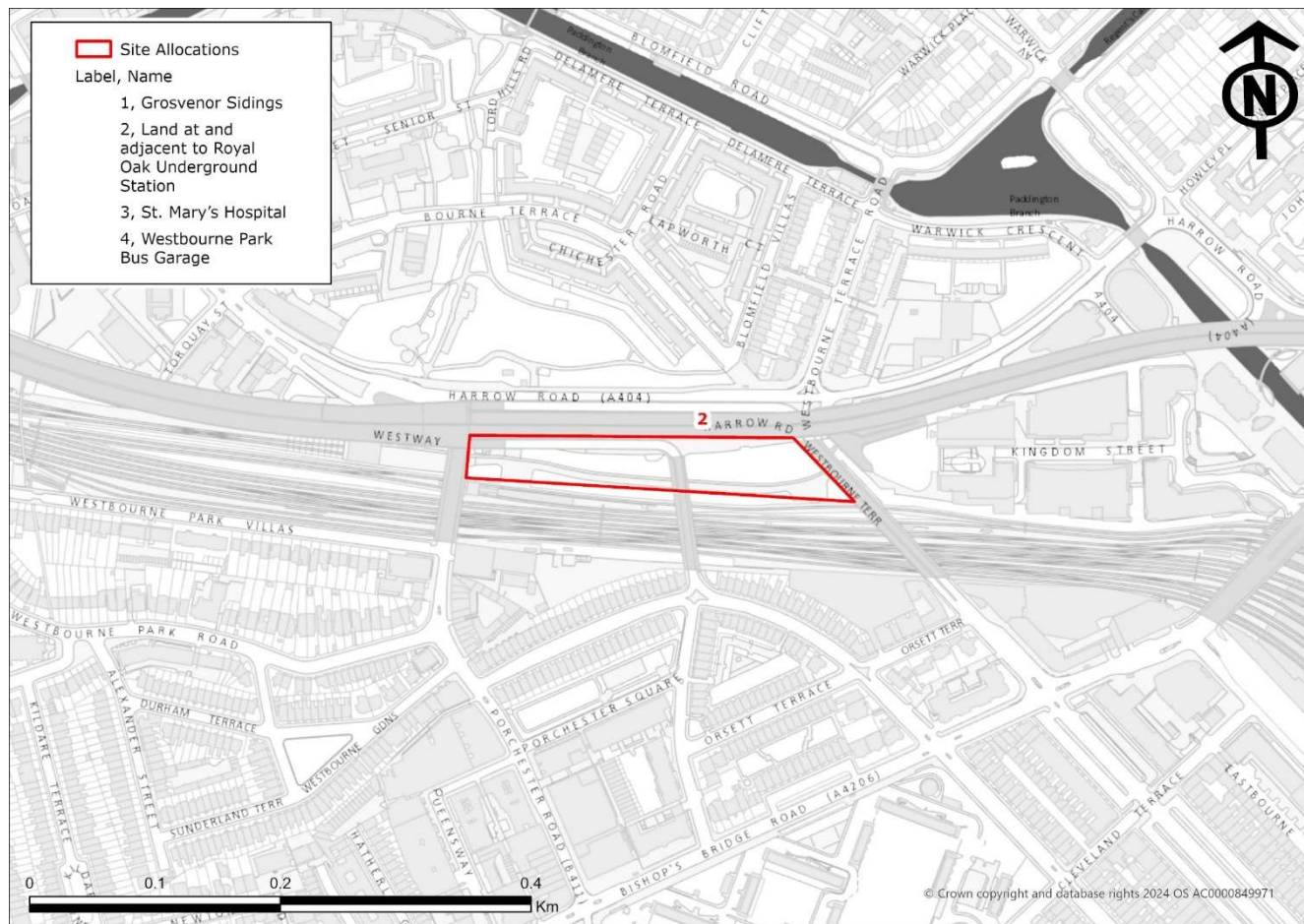
2.1 Overview of all changes to Westminster's spatial designations and Policies Map

This section presents an overview of the proposed changes to spatial designations for the site allocations which have been included in the Regulation 19 Draft Policies Map. All other spatial designations not mentioned in this document remain unchanged. All site boundaries are new additions to the City Plan.

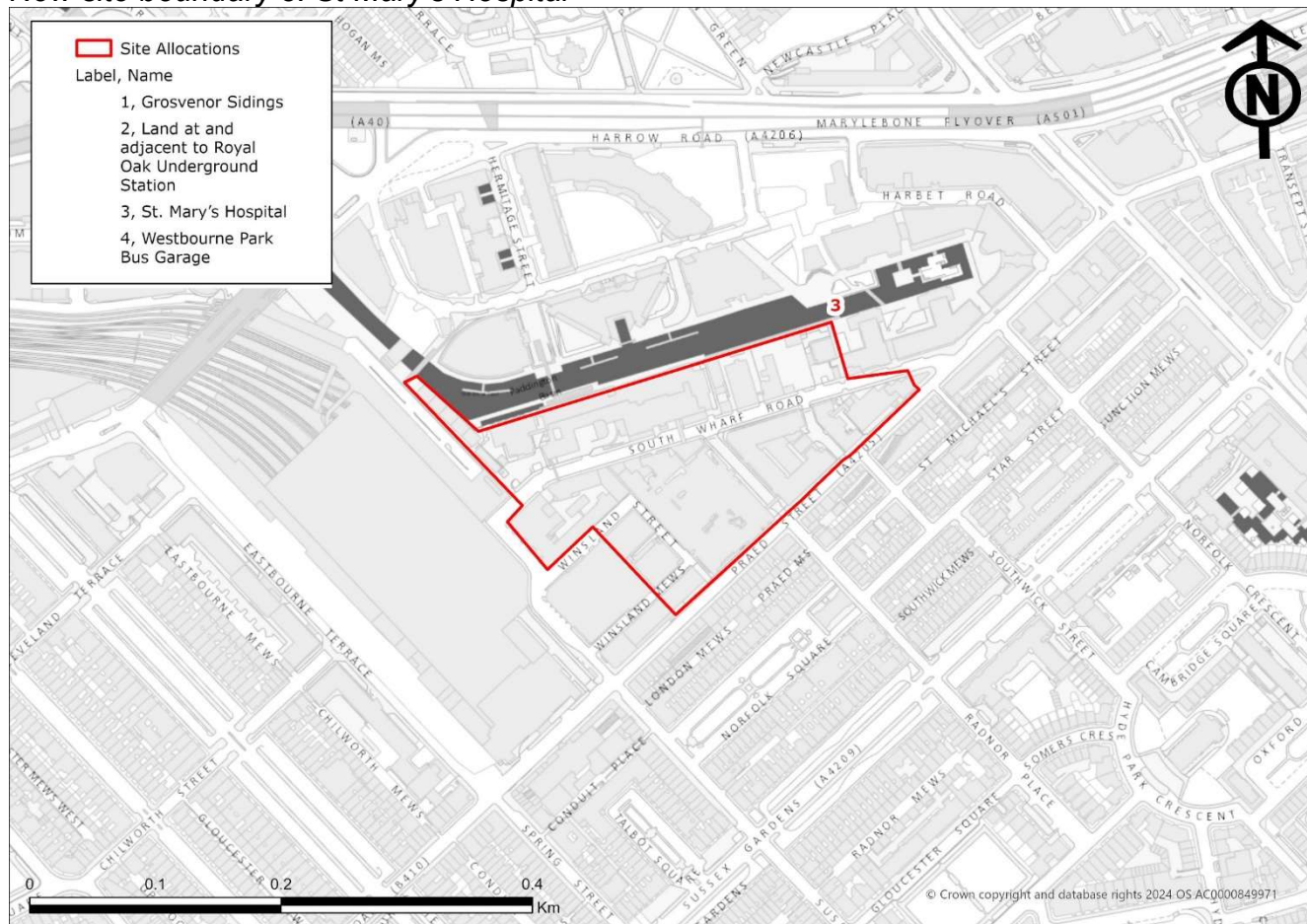
New site boundary 1: Westbourne Park Bus Garage



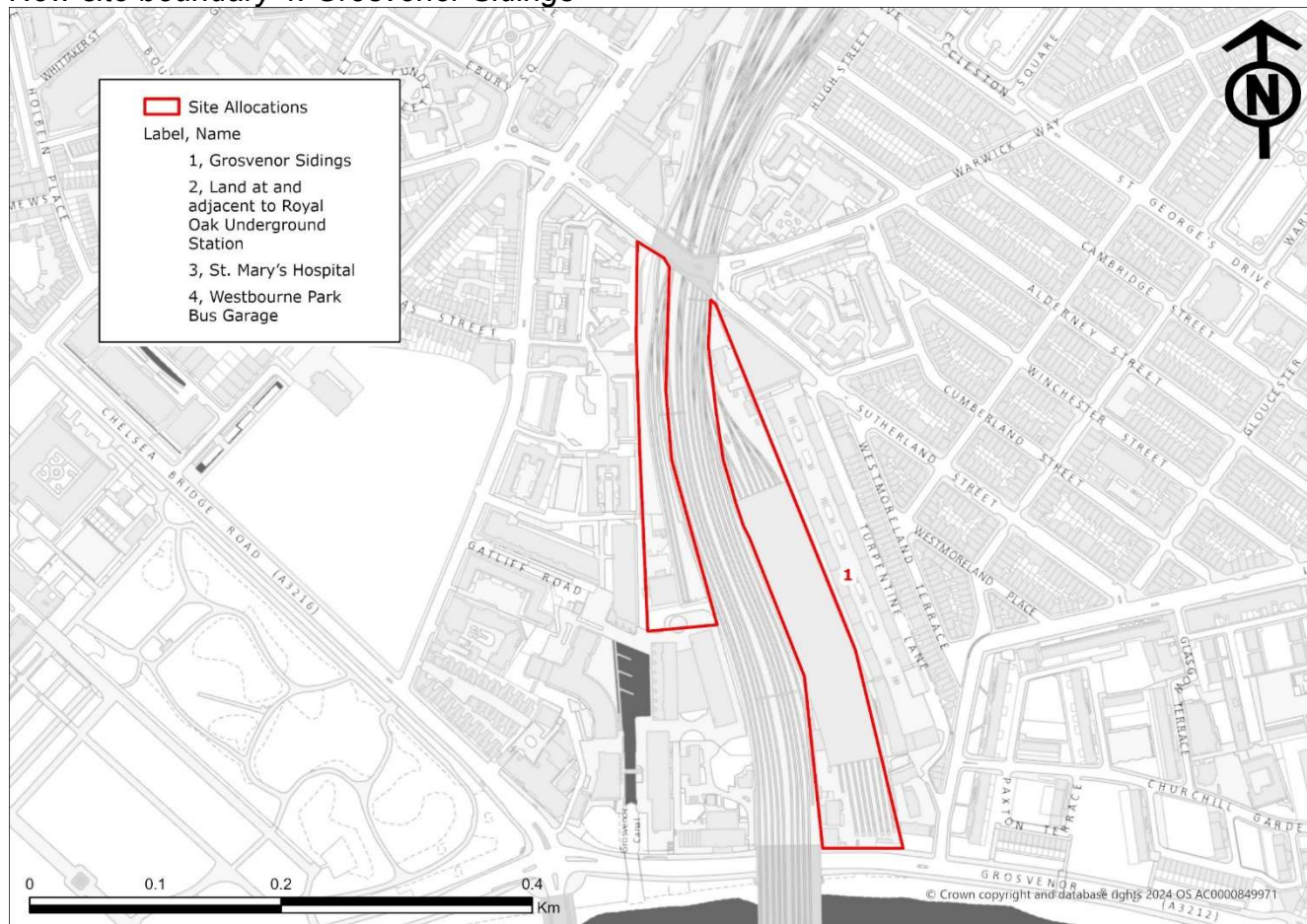
New site boundary 2: Land adjacent to Royal Oak Station



New site boundary 3: St Mary's Hospital



New site boundary 4: Grosvenor Sidings



Westminster City Council
64 Victoria Street
London, SW1E 6QP

020 7641 6000

March 2024

